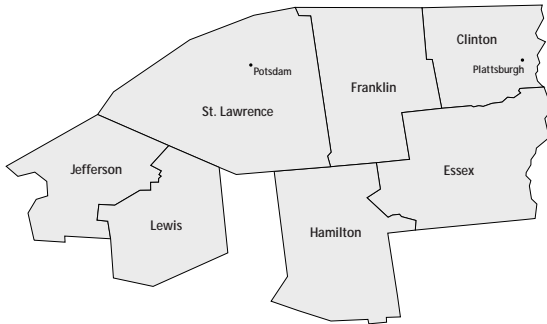


NORTH COUNTRY



THE NORTH COUNTRY comprises seven counties in the northern portion of the state. The Adirondack Park has a distinct impact on the development of all counties in the region. None of the North Country counties belong to a metropolitan statistical area.

Incomes and Wages

- The average nonagricultural wage of \$25,800 is one of the lowest in the state, significantly lower than even the upstate average of \$29,000. Per capita income was \$17,600 in 1997.
- Real total personal income increased between 1989 and 1997 by 2.6 percent. Total earnings (wages and salaries plus proprietors' income) fell by 3.1 percent. Proprietors' income fell by 21 percent.

Employment Change, 1992-98

- By far the largest amount of employment growth that occurred in the North Country was due to an increase of 1,400 government jobs, many in enforcement services for the region's prisons.
- Social and health services, department store retail and wholesale trade, and selected manufacturing industries experienced the largest employment gains. Railroad equipment grew over this period due to the location of Bombardier in Plattsburgh to produce railroad cars for the Metropolitan Transit Authority.
- The two industries with the largest decline in employment were eating and drinking places, and printing and paper products, sharing a 2,000 job decline between 1992 and 1998. The loss of jobs in eating and drinking places can be partly attributed to the declines in Canadian tourist expenditures. Apparel and grocery stores, sectors also dependent on tourism, experienced a total job loss of 750 individuals.
- In 1995, the Plattsburgh Air Force Base closed, resulting in the loss of almost 800 civilian jobs and about 2,400 military personnel to Clinton County.
- Compared to most upstate regions, the North Country's share of manufacturing is one of the lowest, although the region is still more dependent on manufacturing for employment than the state overall.

North Country Data Bank

Share of State Population, 1998	2.8%
Wage and Salary Job Growth, 1989 - 98	2.3%
Unemployment Rate, 1998	6.1%
Population, 1998	423,525
Insured Employment, 1998	145,795
Per Capita Income, 1997	\$17,600

Job Mix, 1998

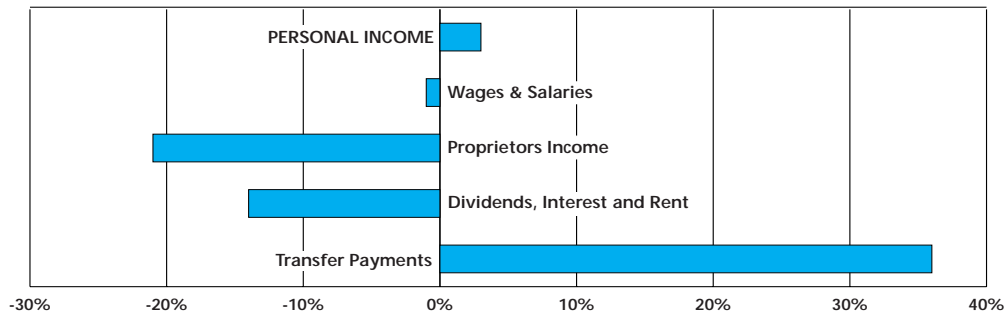
	North Country
Construction	4%
Manufacturing	13%
Transportation	4%
Wholesale Trade	3%
Retail Trade	20%
FIRE	3%
Services	24%
Government	28%
Other	1%
TOTAL	100%

North Country's Ten Private Industries with Largest Growth, 1992-98

SIC	SECTOR	EMPLOYMENT 1998	EMPLOYMENT CHANGE 1992-98	RATE OF EMPLOYMENT CHANGE	AVERAGE WAGE 1998
	TOTAL PRIVATE	104,622	3,060	3.0%	\$23,377
860	Membership organizations	2,678	660	32.7%	\$14,736
836	Residential care	1,658	590	55.2%	\$15,952
374	Railroad equipment	561	561	n.m.	\$44,169
801	Offices and clinics of medical doctors	1,970	400	25.5%	\$47,965
832	Individual and family services	1,468	384	35.4%	\$14,338
531	Department stores	3,180	373	13.3%	\$12,886
500	Wholesale trade, durable and nondurable	4,263	283	7.1%	\$25,594
806	Hospitals	6,340	281	4.6%	\$27,906
283	Drugs	1,663	263	18.8%	\$46,844
336	Nonferrous foundries (castings)	664	248	59.6%	\$56,556
	TOTAL, these ten private growing industries	24,445	4,043	19.8%	\$28,406

NEW YORK'S REGIONS IN THE 1990s

North Country – Change in Personal Income and Components, 1989-97



- The region is considerably more dependent on retail trade and government employment compared to the state, with retail trade comprising 20 percent of all employment and government, 28 percent in 1998.
- Employment between the first half of 1998 and the first half of 1999 in the North Country grew above 1 percent, continuing an acceleration in growth since 1996.

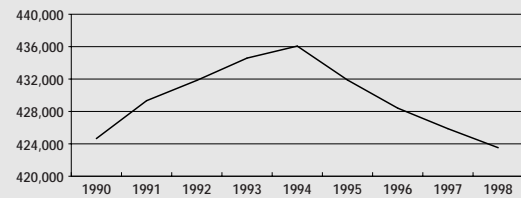
Job Change Impact on Wages

- Unlike most other regions in the state, sectors with growing employment had wages of \$28,400 in 1998, higher than the average private sector wage of the region as a whole. They replaced jobs in sectors that had slightly lower average wages compared to the regional average.
- Real average wages for all employment in the North Country grew by 2.8 percent between 1989 and 1998, at a rate higher than the upstate region as a whole.

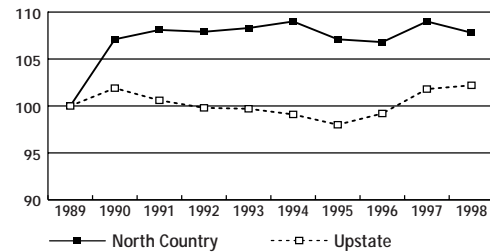
Population, Labor Force, and Unemployment Change

- Total population in the North Country declined by 2.6 percent between 1993 and 1998. The population decline was largely due to outmigration.
- The North Country's unemployment rate was consistently the highest of the upstate regions over the decade, at 9.2 percent for the first half of 1999.

North Country Population, 1990-98



Labor Force Changes Relative to 1989 Levels



North Country's Ten Private Industries with Greatest Decline, 1992-98

SIC	SECTOR	EMPLOYMENT 1998	EMPLOYMENT CHANGE 1992-98	RATE OF EMPLOYMENT CHANGE	AVERAGE WAGE 1998
	TOTAL PRIVATE	104,622	3,060	3.0%	\$23,377
581	Eating and drinking places	9,881	-1,052	-9.6%	\$9,074
260	Paper and allied products	4,512	-627	-12.2%	\$42,275
275	Printing	221	-531	-70.6%	\$16,107
200	Food and kindred products	1,189	-530	-30.8%	\$30,380
560	Apparel and accessory stores	1,013	-440	-30.3%	\$9,623
541	Grocery stores	4,591	-312	-6.4%	\$13,573
600	Depository institutions	1,797	-285	-13.7%	\$24,521
310	Leather and leather products	508	-233	-31.4%	\$17,315
490	Electric, gas, and sanitary services	999	-197	-16.5%	\$71,325
415	School buses	81	-187	-69.8%	\$24,044
	TOTAL, these ten private declining industries	24,792	-4,394	-15.1%	\$22,473