

Voted for the AHCA Bill?	Yes
Voted for the GOP Tax Bill?	No
Number of Uninsured By 2025 With Repeal of ACA Individual Mandate	17,500

Population and Household

Total Population in District	711,798
Foreign Born	24,075
Total Households	277,069
Households Making Less Than \$15,000 in Income	31,759
Households Making \$15,000 to \$34,999 in Income	58,674
Median Household Income (\$)	\$52,350

SNAP

SNAP Households	39,884
SNAP Households with Children	16,822
SNAP Households with Elderly	11,615
SNAP Retailers in District	743
SNAP Families Who Worked in 2015 (Households of 2 or More People)	74%

Medicaid

Medicaid Recipients	164,136
Medicaid Recipients Under 18	81,942
Medicaid Recipients 65 and Older	15,070
Medicaid Recipients Who Are Female	86,869

HUD

Individuals Receiving HUD Rental Assistance	20,304
Households Receiving HUD Rental Assistance	11,438
HUD Households with Children	3,180
Household Heads Receiving HUD Rental Assistance Who Are Single Mothers	2,427
Number of Household Head or Spouse Receiving HUD Rental Assistance Who are Disabled and/or Elderly	8,328

EITC and Social Security

EITC Tax Filers in 2014	56,790
SSI Beneficiaries in 2016	19,122
SSDI Beneficiaries in 2016	28,437

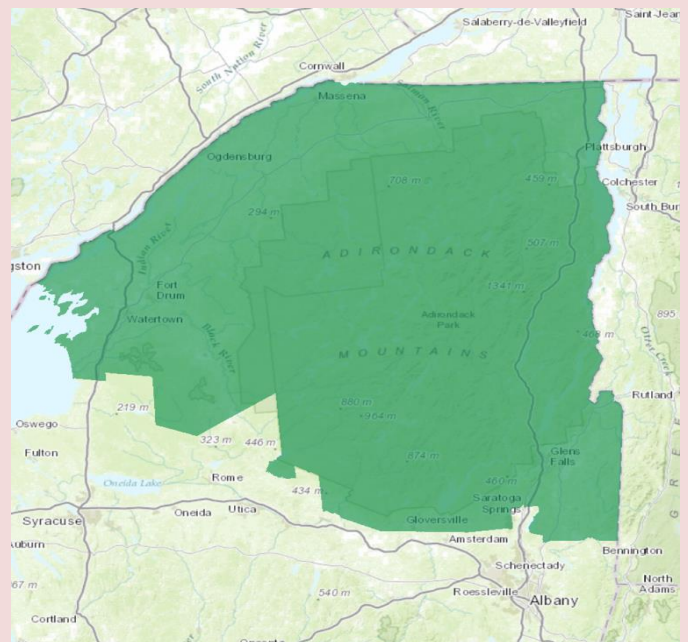
State/Local Tax Returns

Total State Tax Returns	310,498
Number of SALT Returns	70,671
Amount Deducted from SALT Returns (\$1000s)	\$805,662
Income/Sales Deduction as Percent of Total SALT Deduction	57.1%



Poverty in District #21

All Families Living in Poverty	8.9%
Families with Single-Mom Householder	26.7%
All Individuals Living in Poverty	13.7%
Children Living in Poverty (Under 18 Years)	18.9%
Seniors Living in Poverty (65+ Years)	7.5%



Source: Federal Funds Information for States (FFIS), U.S. Census American Community Survey (2017) and Institute on Taxation and Economic Policy (ITEP)