

District #1

Lee Zeldin (R-Shirley)

Voted for the AHCA Bill?	Yes
Voted for the GOP Tax Bill?	No
Number of Uninsured By 2025 With Repeal of ACA Individual Mandate	43,000

Population and Household

Total Population in District	718,175
Foreign Born	92,551
Total Households	237,708
Households Making Less Than \$15,000 in Income	15,798
Households Making \$15,000 to \$34,999 in Income	27,873
Median Household Income (\$)	\$90,435

SNAP

SNAP Households	15,621
SNAP Households with Children	5,740
SNAP Households with Elderly	8,079
SNAP Retailers in District	371
SNAP Families Who Worked in 2015 (Households of 2 or More People)	67%

Medicaid

Medicaid Recipients	98,771
Medicaid Recipients Under 18	46,238
Medicaid Recipients 65 and Older	10,593
Medicaid Recipients Who Are Female	48,813

HUD

Individuals Receiving HUD Rental Assistance	12,045
Households Receiving HUD Rental Assistance	6,503
HUD Households with Children	1,769
Household Heads Receiving HUD Rental Assistance Who Are Single Mothers	1,574
Number of Household Head or Spouse Receiving HUD Rental Assistance Who are Disabled and/or Elderly	4,6558

EITC and Social Security

EITC Tax Filers in 2014	36,204
SSI Beneficiaries in 2016	9,796
SSDI Beneficiaries in 2016	18,813

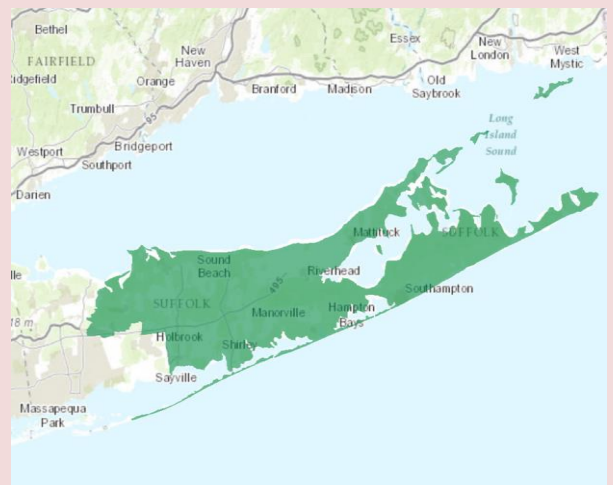
State/Local Tax Returns

Total State Tax Returns	353,170
Number of SALT Returns	168,256
Amount Deducted from SALT Returns (\$1000s)	\$3,006,503
Income/Sales Deduction as Percent of Total SALT Deduction	51.7%



Poverty in District #1

All Families Living in Poverty	5.3%
Families with Single-Mom Householder	18.5%
All Individuals Living in Poverty	7.2%
Children Living in Poverty (Under 18 Years)	9.6%
Seniors Living in Poverty (65+ Years)	5.5%



Source: Federal Funds Information for States (FFIS), U.S. Census American Community Survey (2017) and Institute on Taxation and Economic Policy (ITEP)