

Voted for the AHCA Bill?	No
Voted for the GOP Tax Bill?	No
Number of Uninsured By 2025 With Repeal of ACA Individual Mandate	17,900

**Population and Household**

Total Population in District	709,220
Foreign Born	55,003
Total Households	298,589
Households Making Less Than \$15,000 in Income	51,210
Households Making \$15,000 to \$34,999 in Income	65,021
Median Household Income (\$)	\$47,358

**SNAP**

SNAP Households	64,790
SNAP Households with Children	27,284
SNAP Households with Elderly	18,302
SNAP Retailers in District	795
SNAP Families Who Worked in 2015 (Households of 2 or More People)	71%

**Medicaid**

Medicaid Recipients	212,405
Medicaid Recipients Under 18	107,845
Medicaid Recipients 65 and Older	17,044
Medicaid Recipients Who Are Female	117,611

**HUD**

Individuals Receiving HUD Rental Assistance	45,235
Households Receiving HUD Rental Assistance	23,557
HUD Households with Children	8,229
Household Heads Receiving HUD Rental Assistance Who Are Single Mothers	7,291
Number of Household Head or Spouse Receiving HUD Rental Assistance Who are Disabled and/or Elderly	13,853

**EITC and Social Security**

EITC Tax Filers in 2014	64,664
SSI Beneficiaries in 2016	28,467
SSDI Beneficiaries in 2016	28,172

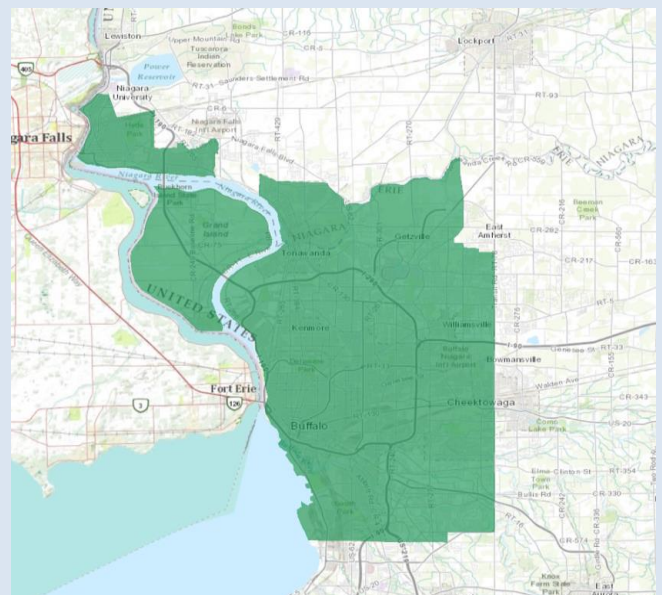
**State/Local Tax Returns**

Total State Tax Returns	337,775
Number of SALT Returns	79,400
Amount Deducted from SALT Returns (\$1000s)	\$911,206
Income/Sales Deduction as Percent of Total SALT Deduction	57.8%



**Poverty in District #26**

All Families Living in Poverty	12.7%
Families with Single-Mom Householder	26.8%
All Individuals Living in Poverty	17.8%
Children Living in Poverty (Under 18 Years)	25.7%
Seniors Living in Poverty (65+ Years)	9.5%



Source: Federal Funds Information for States (FFIS), U.S. Census American Community Survey (2017) and Institute on Taxation and Economic Policy (ITEP)