

New York State at a Glance

Population, Age, and Gender

Total Population (as of July 2017)	19,849,399
Persons Under 5 Years	5.9%
Persons Under 18 Years	21.2%
Persons 65 Years and Over	15.4%
Female Persons	51.4%

Race and Hispanic Origin

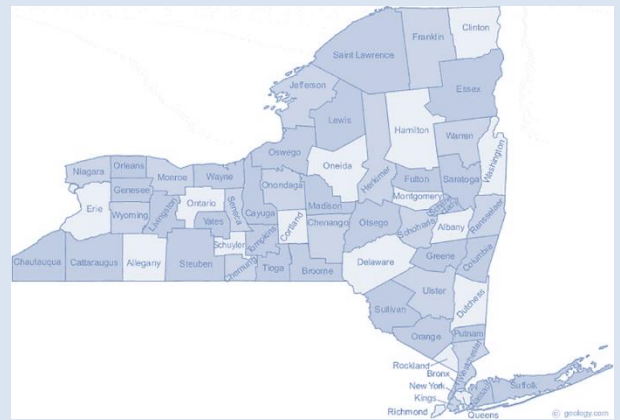
White (non-Hispanic)	69.9%
Black or African American	17.7%
Hispanic or Latino	19.0%
Asian	8.9%
American Indian and Alaska Native	1.0%
Native Hawaiian and Pacific Islander	0.1%
Two or More Races	2.5%

Households, Housing, Families and Living Arrangement

Households	7,266,187
Housing Units	8,231,687
Owner-Occupied Housing Rate, 2012-2016	53.6%
Median Value of Owner-Occupied Housing Units	\$286,300

Education, Health, Income, and Poverty

High School Graduate or Higher (Persons Age 25+ Years)	85.9%
Bachelor's Degree or Higher (Persons Age+ Years)	34.7%
Persons with A Disability (Under Age 65 Years)	7.5%
Persons without Health Insurance (Under Age 65 Years)	7.0%
Median Household Income	\$60,741
Persons Living in Poverty	14.7%



Source: U.S. Census American Community Survey (2017)

District #1

Lee Zeldin (R-Shirley)

Voted for the AHCA Bill?	Yes
Voted for the GOP Tax Bill?	No
Number of Uninsured By 2025 With Repeal of ACA Individual Mandate	43,000

Population and Household

Total Population in District	718,175
Foreign Born	92,551
Total Households	237,708
Households Making Less Than \$15,000 in Income	15,798
Households Making \$15,000 to \$34,999 in Income	27,873
Median Household Income (\$)	\$90,435

SNAP

SNAP Households	15,621
SNAP Households with Children	5,740
SNAP Households with Elderly	8,079
SNAP Retailers in District	371
SNAP Families Who Worked in 2015 (Households of 2 or More People)	67%

Medicaid

Medicaid Recipients	98,771
Medicaid Recipients Under 18	46,238
Medicaid Recipients 65 and Older	10,593
Medicaid Recipients Who Are Female	48,813

HUD

Individuals Receiving HUD Rental Assistance	12,045
Households Receiving HUD Rental Assistance	6,503
HUD Households with Children	1,769
Household Heads Receiving HUD Rental Assistance Who Are Single Mothers	1,574
Number of Household Head or Spouse Receiving HUD Rental Assistance Who are Disabled and/or Elderly	4,6558

EITC and Social Security

EITC Tax Filers in 2014	36,204
SSI Beneficiaries in 2016	9,796
SSDI Beneficiaries in 2016	18,813

State/Local Tax Returns

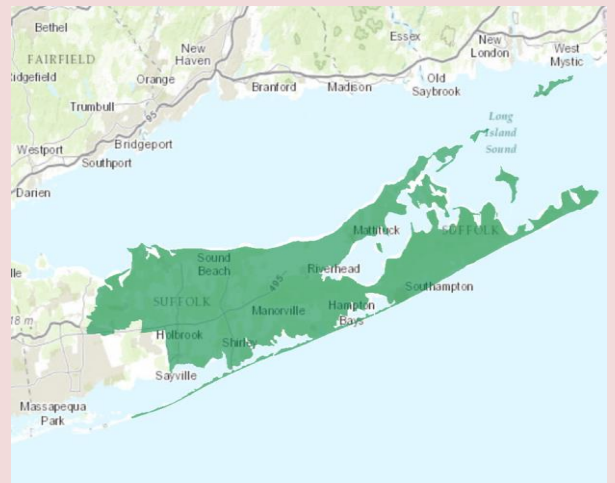
Total State Tax Returns	353,170
Number of SALT Returns	168,256
Amount Deducted from SALT Returns (\$1000s)	\$3,006,503
Income/Sales Deduction as Percent of Total SALT Deduction	51.7%

Source: Federal Funds Information for States (FFIS), U.S. Census American Community Survey (2017) and Institute on Taxation and Economic Policy (ITEP)



Poverty in District #1

All Families Living in Poverty	5.3%
Families with Single-Mom Householder	18.5%
All Individuals Living in Poverty	7.2%
Children Living in Poverty (Under 18 Years)	9.6%
Seniors Living in Poverty (65+ Years)	5.5%



District #2

Peter King (R-Seafood)

Voted for the AHCA Bill?	Yes
Voted for the GOP Tax Bill?	No
Number of Uninsured By 2025 With Repeal of ACA Individual Mandate	19,100

Population and Household

Total Population in District	714,040
Foreign Born	131,323
Total Households	217,363
Households Making Less Than \$15,000 in Income	12,052
Households Making \$15,000 to \$34,999 in Income	26,157
Median Household Income (\$)	\$93,362

SNAP

SNAP Households	14,606
SNAP Households with Children	6,926
SNAP Households with Elderly	7,809
SNAP Retailers in District	336
SNAP Families Who Worked in 2015 (Households of 2 or More People)	82%

Medicaid

Medicaid Recipients	104,404
Medicaid Recipients Under 18	50,625
Medicaid Recipients 65 and Older	14,606
Medicaid Recipients Who Are Female	54,149

HUD

Individuals Receiving HUD Rental Assistance	9,775
Households Receiving HUD Rental Assistance	4,968
HUD Households with Children	1,389
Household Heads Receiving HUD Rental Assistance Who Are Single Mothers	1,257
Number of Household Head or Spouse Receiving HUD Rental Assistance Who are Disabled and/or Elderly	3,564

EITC and Social Security

EITC Tax Filers in 2014	49,557
SSI Beneficiaries in 2016	9,828
SSDI Beneficiaries in 2016	19,501

State/Local Tax Returns

Total State Tax Returns	379,732
Number of SALT Returns	172,991
Amount Deducted from SALT Returns (\$1000s)	\$2,633,817
Income/Sales Deduction as Percent of Total SALT Deduction	42.3%

Source: Federal Funds Information for States (FFIS), U.S. Census American Community Survey (2017) and Institute on Taxation and Economic Policy (ITEP)



Poverty in District #2

All Families Living in Poverty	5.1%
Families with Single-Mom Householder	14.7%
All Individuals Living in Poverty	7.1%
Children Living in Poverty (Under 18 Years)	10.5%
Seniors Living in Poverty (65+ Years)	6.4%



District #3

Thomas Suozzi (D-Glen Cove)

Voted for the AHCA Bill?	No
Voted for the GOP Tax Bill?	No
Number of Uninsured By 2025 With Repeal of ACA Individual Mandate	45,100

Population and Household

Total Population in District	732,591
Foreign Born	164,738
Total Households	247,036
Households Making Less Than \$15,000 in Income	12,229
Households Making \$15,000 to \$34,999 in Income	24,785
Median Household Income (\$)	\$111,504

SNAP

SNAP Households	10,175
SNAP Households with Children	3,346
SNAP Households with Elderly	6,443
SNAP Retailers in District	256
SNAP Families Who Worked in 2015 (Households of 2 or More People)	77%

Medicaid

Medicaid Recipients	75,199
Medicaid Recipients Under 18	26,963
Medicaid Recipients 65 and Older	12,518
Medicaid Recipients Who Are Female	39,961

HUD

Individuals Receiving HUD Rental Assistance	6,416
Households Receiving HUD Rental Assistance	3,538
HUD Households with Children	797
Household Heads Receiving HUD Rental Assistance Who Are Single Mothers	665
Number of Household Head or Spouse Receiving HUD Rental Assistance Who are Disabled and/or Elderly	2,615

EITC and Social Security

EITC Tax Filers in 2014	27,844
SSI Beneficiaries in 2016	7,014
SSDI Beneficiaries in 2016	11,625

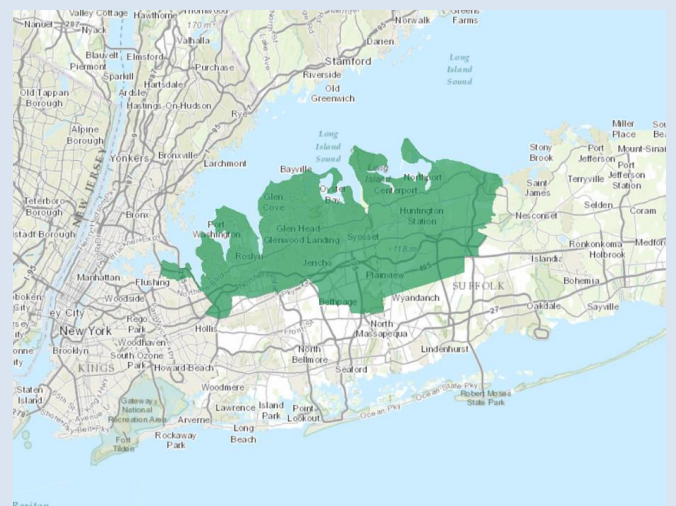
State/Local Tax Returns

Total State Tax Returns	364,374
Number of SALT Returns	199,084
Amount Deducted from SALT Returns (\$1000s)	\$5,978,112
Income/Sales Deduction as Percent of Total SALT Deduction	59.5%



Poverty in District #3

All Families Living in Poverty	3.3%
Families with Single-Mom Householder	12.5%
All Individuals Living in Poverty	5.2%
Children Living in Poverty (Under 18 Years)	5.9%
Seniors Living in Poverty (65+ Years)	4.8%



Source: Federal Funds Information for States (FFIS), U.S. Census American Community Survey (2017) and Institute on Taxation and Economic Policy (ITEP)

District #4

Kathleen Rice (D-Garden City)



Population and Household

Total Population in District	723,377
Foreign Born	162,189
Total Households	230,997
Households Making Less Than \$15,000 in Income	13,860
Households Making \$15,000 to \$34,999 in Income	26,287
Median Household Income (\$)	\$100,178

SNAP

SNAP Households	12,457
SNAP Households with Children	5,669
SNAP Households with Elderly	5,998
SNAP Retailers in District	434
SNAP Families Who Worked in 2015 (Households of 2 or More People)	83%

Medicaid

Medicaid Recipients	105,312
Medicaid Recipients Under 18	50,279
Medicaid Recipients 65 and Older	13,934
Medicaid Recipients Who Are Female	55,974

HUD

Individuals Receiving HUD Rental Assistance	14,985
Households Receiving HUD Rental Assistance	7,570
HUD Households with Children	2,143
Household Heads Receiving HUD Rental Assistance Who Are Single Mothers	1,901
Number of Household Head or Spouse Receiving HUD Rental Assistance Who are Disabled and/or Elderly	4,873

EITC and Social Security

EITC Tax Filers in 2014	45,998
SSI Beneficiaries in 2016	10,145
SSDI Beneficiaries in 2016	14,740

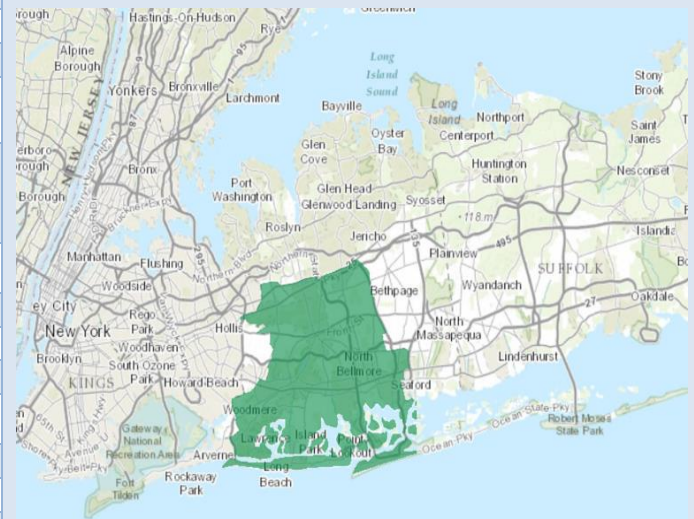
State/Local Tax Returns

Total State Tax Returns	377,536
Number of SALT Returns	184,824
Amount Deducted from SALT Returns (\$1000s)	\$3,574,029
Income/Sales Deduction as Percent of Total SALT Deduction	50.4%

Source: Federal Funds Information for States (FFIS), U.S. Census American Community Survey (2017) and Institute on Taxation and Economic Policy (ITEP)

Poverty in District #4

All Families Living in Poverty	4.7%
Families with Single-Mom Householder	15.9%
All Individuals Living in Poverty	6.8%
Children Living in Poverty (Under 18 Years)	9.5%
Seniors Living in Poverty (65+ Years)	6.0%



Voted for the AHCA Bill?	No
Voted for the GOP Tax Bill?	No
Number of Uninsured By 2025 With Repeal of ACA Individual Mandate	42,100

Population and Household

Total Population in District	794,154
Foreign Born	333,818
Total Households	224,668
Households Making Less Than \$15,000 in Income	22,401
Households Making \$15,000 to \$34,999 in Income	37,281
Median Household Income (\$)	\$66,529

SNAP

SNAP Households	37,702
SNAP Households with Children	19,484
SNAP Households with Elderly	18,847
SNAP Retailers in District	698
SNAP Families Who Worked in 2015 (Households of 2 or More People)	85%

Medicaid

Medicaid Recipients	235,259
Medicaid Recipients Under 18	110,832
Medicaid Recipients 65 and Older	23,095
Medicaid Recipients Who Are Female	125,793

HUD

Individuals Receiving HUD Rental Assistance	33,242
Households Receiving HUD Rental Assistance	14,843
HUD Households with Children	5,451
Household Heads Receiving HUD Rental Assistance Who Are Single Mothers	4,896
Number of Household Head or Spouse Receiving HUD Rental Assistance Who are Disabled and/or Elderly	8,074

EITC and Social Security

EITC Tax Filers in 2014	89,223
SSI Beneficiaries in 2016	29,233
SSDI Beneficiaries in 2016	15,740

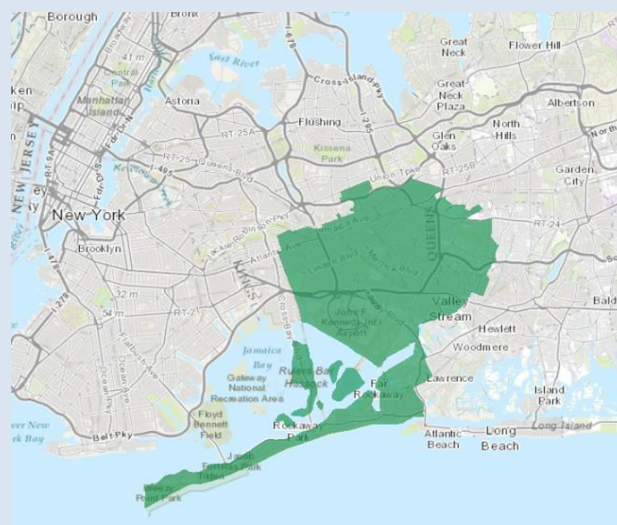
State/Local Tax Returns

Total State Tax Returns	362,821
Number of SALT Returns	124,566
Amount Deducted from SALT Returns (\$1000s)	\$1,227,476
Income/Sales Deduction as Percent of Total SALT Deduction	66.7%



Poverty in District #5

All Families Living in Poverty	10.3%
Families with Single-Mom Householder	17.2%
All Individuals Living in Poverty	12.4%
Children Living in Poverty (Under 18 Years)	18.6%
Seniors Living in Poverty (65+ Years)	11.3%



Source: Federal Funds Information for States (FFIS), U.S. Census American Community Survey (2017) and Institute on Taxation and Economic Policy (ITEP)

District #6

Grace Meng (D-Flushing)

Voted for the AHCA Bill?	No
Voted for the GOP Tax Bill?	No
Number of Uninsured By 2025 With Repeal of ACA Individual Mandate	39,800

Population and Household

Total Population in District	753,744
Foreign Born	385,155
Total Households	266,579
Households Making Less Than \$15,000 in Income	38,042
Households Making \$15,000 to \$34,999 in Income	50,454
Median Household Income (\$)	\$61,956

SNAP

SNAP Households	28,064
SNAP Households with Children	9,728
SNAP Households with Elderly	18,230
SNAP Retailers in District	489
SNAP Families Who Worked in 2015 (Households of 2 or More People)	73%

Medicaid

Medicaid Recipients	183,967
Medicaid Recipients Under 18	79,478
Medicaid Recipients 65 and Older	26,908
Medicaid Recipients Who Are Female	102,720

HUD

Individuals Receiving HUD Rental Assistance	9,816
Households Receiving HUD Rental Assistance	5,243
HUD Households with Children	1,133
Household Heads Receiving HUD Rental Assistance Who Are Single Mothers	980
Number of Household Head or Spouse Receiving HUD Rental Assistance Who are Disabled and/or Elderly	3,579

EITC and Social Security

EITC Tax Filers in 2014	92,724
SSI Beneficiaries in 2016	18,472
SSDI Beneficiaries in 2016	10,208

State/Local Tax Returns

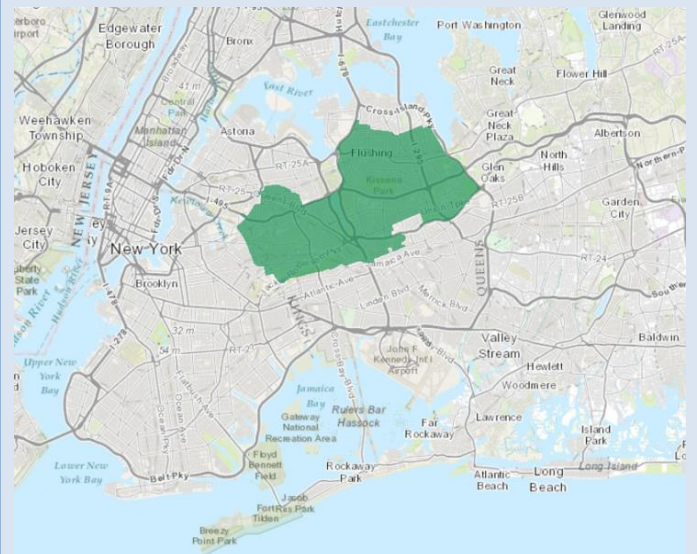
Total State Tax Returns	369,321
Number of SALT Returns	110,515
Amount Deducted from SALT Returns (\$1000s)	\$1,449,292
Income/Sales Deduction as Percent of Total SALT Deduction	74.1%

Source: Federal Funds Information for States (FFIS), U.S. Census American Community Survey (2017) and Institute on Taxation and Economic Policy (ITEP))



Poverty in District #6

All Families Living in Poverty	11.4%
Families with Single-Mom Householder	18.0%
All Individuals Living in Poverty	14.2%
Children Living in Poverty (Under 18 Years)	17.0%
Seniors Living in Poverty (65+ Years)	16.5%



District #7

Nydia Velázquez (D-Sunset Park)



Voted for the AHCA Bill?	No
Voted for the GOP Tax Bill?	No
Number of Uninsured By 2025 With Repeal of ACA Individual Mandate	35,200

Population and Household

Total Population in District	763,468
Foreign Born	272,384
Total Households	256,169
Households Making Less Than \$15,000 in Income	44,197
Households Making \$15,000 to \$34,999 in Income	47,380
Median Household Income (\$)	\$55,207

SNAP

SNAP Households	65,955
SNAP Households with Children	30,369
SNAP Households with Elderly	30,696
SNAP Retailers in District	1,146
SNAP Families Who Worked in 2015 (Households of 2 or More People)	75%

Medicaid

Medicaid Recipients	324,764
Medicaid Recipients Under 18	177,007
Medicaid Recipients 65 and Older	39,628
Medicaid Recipients Who Are Female	173,646

HUD

Individuals Receiving HUD Rental Assistance	101,302
Households Receiving HUD Rental Assistance	41,222
HUD Households with Children	13,140
Household Heads Receiving HUD Rental Assistance Who Are Single Mothers	9,095
Number of Household Head or Spouse Receiving HUD Rental Assistance Who are Disabled and/or Elderly	23,698

EITC and Social Security

EITC Tax Filers in 2014	93,330
SSI Beneficiaries in 2016	33,784
SSDI Beneficiaries in 2016	12,788

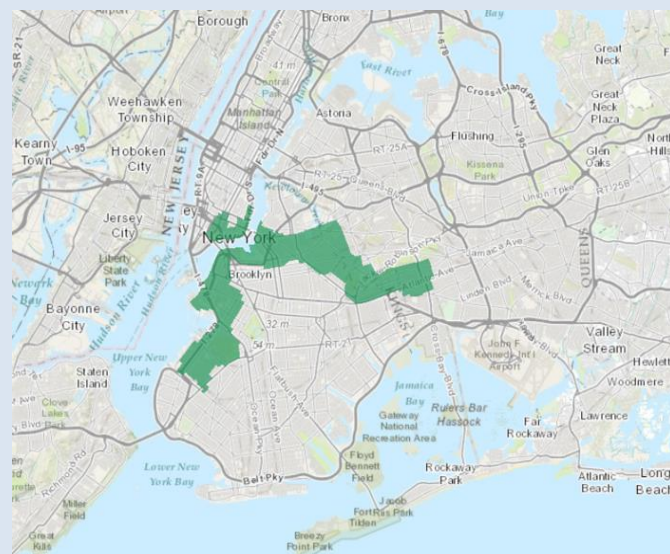
State/Local Tax Returns

Total State Tax Returns	353,774
Number of SALT Returns	96,599
Amount Deducted from SALT Returns (\$1000s)	\$2,157,735
Income/Sales Deduction as Percent of Total SALT Deduction	89.7%

Source: Federal Funds Information for States (FFIS), U.S. Census American Community Survey (2017) and Institute on Taxation and Economic Policy (ITEP)

Poverty in District #7

All Families Living in Poverty	20.0%
Families with Single-Mom Householder	30.7%
All Individuals Living in Poverty	23.6%
Children Living in Poverty (Under 18 Years)	33.3%
Seniors Living in Poverty (65+ Years)	27.1%



Voted for the AHCA Bill?	No
Voted for the GOP Tax Bill?	No
Number of Uninsured By 2025 With Repeal of ACA Individual Mandate	49,600

Population and Household

Total Population in District	771,711
Foreign Born	256,032
Total Households	284,949
Households Making Less Than \$15,000 in Income	58,054
Households Making \$15,000 to \$34,999 in Income	48,237
Median Household Income (\$)	\$51,634

SNAP

SNAP Households	71,166
SNAP Households with Children	26,816
SNAP Households with Elderly	32,720
SNAP Retailers in District	946
SNAP Families Who Worked in 2015 (Households of 2 or More People)	72%

Medicaid

Medicaid Recipients	273,415
Medicaid Recipients Under 18	122,414
Medicaid Recipients 65 and Older	38,728
Medicaid Recipients Who Are Female	157,882

HUD

Individuals Receiving HUD Rental Assistance	122,768
Households Receiving HUD Rental Assistance	55,759
HUD Households with Children	18,917
Household Heads Receiving HUD Rental Assistance Who Are Single Mothers	16,445
Number of Household Head or Spouse Receiving HUD Rental Assistance Who are Disabled and/or Elderly	30,079

EITC and Social Security

EITC Tax Filers in 2014	96,581
SSI Beneficiaries in 2016	53,010
SSDI Beneficiaries in 2016	18,926

State/Local Tax Returns

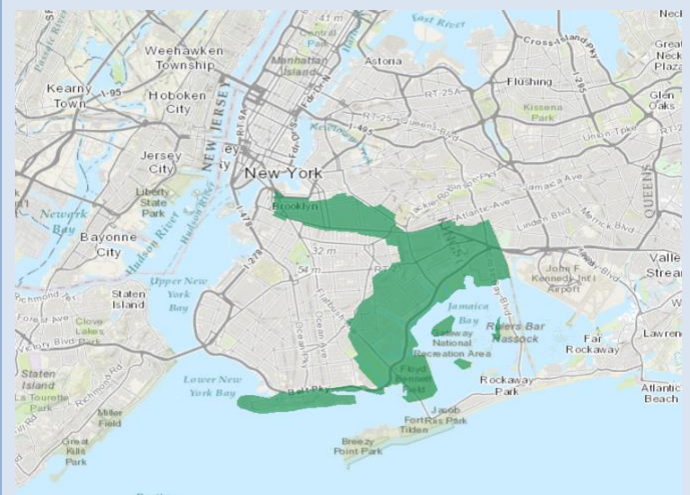
Total State Tax Returns	350,411
Number of SALT Returns	104,670
Amount Deducted from SALT Returns (\$1000s)	\$1,228,059
Income/Sales Deduction as Percent of Total SALT Deduction	81.6%

Source: Federal Funds Information for States (FFIS), U.S. Census American Community Survey (2017) and Institute on Taxation and Economic Policy (ITEP)



Poverty in District #8

All Families Living in Poverty	16.7%
Families with Single-Mom Householder	26.1%
All Individuals Living in Poverty	20.8%
Children Living in Poverty (Under 18 Years)	25.9%
Seniors Living in Poverty (65+ Years)	22.7%



Voted for the AHCA Bill?	No
Voted for the GOP Tax Bill?	No
Number of Uninsured By 2025 With Repeal of ACA Individual Mandate	44,000

Population and Household

Total Population in District	738,674
Foreign Born	296,254
Total Households	274,241
Households Making Less Than \$15,000 in Income	44,496
Households Making \$15,000 to \$34,999 in Income	50,479
Median Household Income (\$)	\$54,895

SNAP

SNAP Households	58,776
SNAP Households with Children	24,044
SNAP Households with Elderly	26,229
SNAP Retailers in District	939
SNAP Families Who Worked in 2015 (Households of 2 or More People)	77%

Medicaid

Medicaid Recipients	250,484
Medicaid Recipients Under 18	118,037
Medicaid Recipients 65 and Older	31,570
Medicaid Recipients Who Are Female	140,377

HUD

Individuals Receiving HUD Rental Assistance	52,104
Households Receiving HUD Rental Assistance	24,298
HUD Households with Children	8,153
Household Heads Receiving HUD Rental Assistance Who Are Single Mothers	7,170
Number of Household Head or Spouse Receiving HUD Rental Assistance Who are Disabled and/or Elderly	13,240

EITC and Social Security

EITC Tax Filers in 2014	92,491
SSI Beneficiaries in 2016	33,648
SSDI Beneficiaries in 2016	13,706

State/Local Tax Returns

Total State Tax Returns	349,294
Number of SALT Returns	101,015
Amount Deducted from SALT Returns (\$1000s)	\$1,421,876
Income/Sales Deduction as Percent of Total SALT Deduction	84.3%

Source: Federal Funds Information for States (FFIS), U.S. Census American Community Survey (2017) and Institute on Taxation and Economic Policy (ITEP)



Poverty in District #9

All Families Living in Poverty	13.9%
Families with Single-Mom Householder	21.2%
All Individuals Living in Poverty	17.7%
Children Living in Poverty (Under 18 Years)	21.8%
Seniors Living in Poverty (65+ Years)	17.5%



District #10

Jerrold Nadler (D-Chelsea)

Voted for the AHCA Bill?	No
Voted for the GOP Tax Bill?	No
Number of Uninsured By 2025 With Repeal of ACA Individual Mandate	37,400

Population and Household

Total Population in District	708,960
Foreign Born	225,274
Total Households	302,765
Households Making Less Than \$15,000 in Income	35,062
Households Making \$15,000 to \$34,999 in Income	45,896
Median Household Income (\$)	\$85,756

SNAP

SNAP Households	37,899
SNAP Households with Children	15,929
SNAP Households with Elderly	19,569
SNAP Retailers in District	651
SNAP Families Who Worked in 2015 (Households of 2 or More People)	78%

Medicaid

Medicaid Recipients	186,553
Medicaid Recipients Under 18	92,939
Medicaid Recipients 65 and Older	28,809
Medicaid Recipients Who Are Female	96,161

HUD

Individuals Receiving HUD Rental Assistance	39,465
Households Receiving HUD Rental Assistance	16,637
HUD Households with Children	4,060
Household Heads Receiving HUD Rental Assistance Who Are Single Mothers	1,887
Number of Household Head or Spouse Receiving HUD Rental Assistance Who are Disabled and/or Elderly	10,684

EITC and Social Security

EITC Tax Filers in 2014	58,178
SSI Beneficiaries in 2016	21,965
SSDI Beneficiaries in 2016	9,404

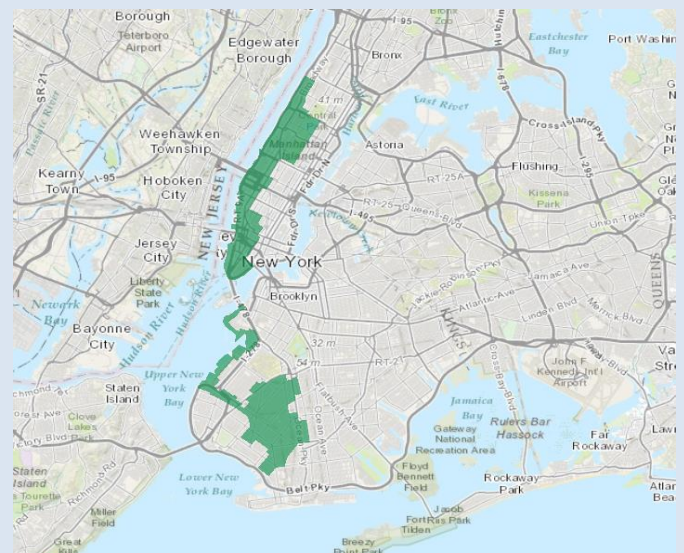
State/Local Tax Returns

Total State Tax Returns	365,864
Number of SALT Returns	167,014
Amount Deducted from SALT Returns (\$1000s)	\$9,243,255
Income/Sales Deduction as Percent of Total SALT Deduction	89.3%



Poverty in District #10

All Families Living in Poverty	12.3%
Families with Single-Mom Householder	28.6%
All Individuals Living in Poverty	16.4%
Children Living in Poverty (Under 18 Years)	25.2%
Seniors Living in Poverty (65+ Years)	15.3%



Source: Federal Funds Information for States (FFIS), U.S. Census American Community Survey (2017) and Institute on Taxation and Economic Policy (ITEP)

District #11

Dan Donovan (R-Great Kills)

Voted for the AHCA Bill?	No
Voted for the GOP Tax Bill?	No
Number of Uninsured By 2025 With Repeal of ACA Individual Mandate	18,900

Population and Household

Total Population in District	735,452
Foreign Born	225,936
Total Households	257,947
Households Making Less Than \$15,000 in Income	30,838
Households Making \$15,000 to \$34,999 in Income	41,232
Median Household Income (\$)	\$71,072

SNAP

SNAP Households	38,351
SNAP Households with Children	15,676
SNAP Households with Elderly	20,172
SNAP Retailers in District	750
SNAP Families Who Worked in 2015 (Households of 2 or More People)	75%

Medicaid

Medicaid Recipients	171,703
Medicaid Recipients Under 18	81,926
Medicaid Recipients 65 and Older	23,583
Medicaid Recipients Who Are Female	93,251

HUD

Individuals Receiving HUD Rental Assistance	33,167
Households Receiving HUD Rental Assistance	15,366
HUD Households with Children	5,087
Household Heads Receiving HUD Rental Assistance Who Are Single Mothers	4,072
Number of Household Head or Spouse Receiving HUD Rental Assistance Who are Disabled and/or Elderly	9,013

EITC and Social Security

EITC Tax Filers in 2014	60,058
SSI Beneficiaries in 2016	28,764
SSDI Beneficiaries in 2016	19,120

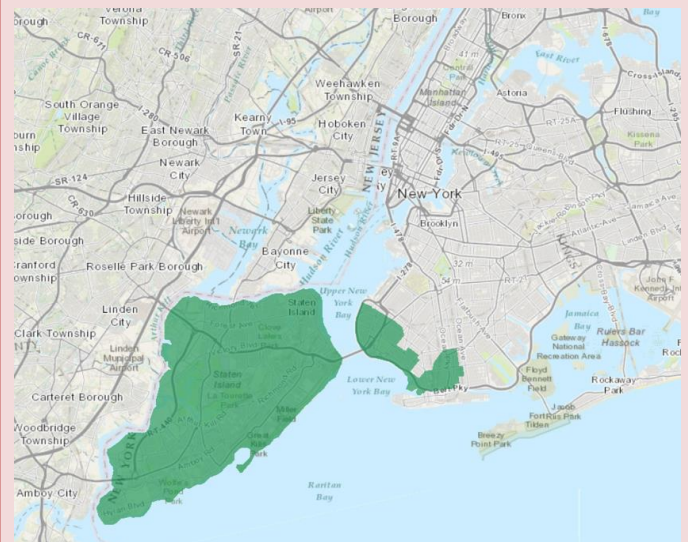
State/Local Tax Returns

Total State Tax Returns	335,049
Number of SALT Returns	133,337
Amount Deducted from SALT Returns (\$1000s)	\$1,967,332
Income/Sales Deduction as Percent of Total SALT Deduction	74.2%



Poverty in District #11

All Families Living in Poverty	11.0%
Families with Single-Mom Householder	24.0%
All Individuals Living in Poverty	14.1%
Children Living in Poverty (Under 18 Years)	20.0%
Seniors Living in Poverty (65+ Years)	14.0%



Source: Federal Funds Information for States (FFIS), U.S. Census American Community Survey (2017) and Institute on Taxation and Economic Policy (ITEP)

District #12

Carolyn Maloney (D-East Harlem)

Voted for the AHCA Bill?	No
Voted for the GOP Tax Bill?	No
Number of Uninsured By 2025 With Repeal of ACA Individual Mandate	40,300

Population and Household

Total Population in District	715,471
Foreign Born	187,356
Total Households	358,652
Households Making Less Than \$15,000 in Income	34,621
Households Making \$15,000 to \$34,999 in Income	36,465
Median Household Income (\$)	\$100,281

SNAP

SNAP Households	21,097
SNAP Households with Children	4,573
SNAP Households with Elderly	10,519
SNAP Retailers in District	530
SNAP Families Who Worked in 2015 (Households of 2 or More People)	71%

Medicaid

Medicaid Recipients	93,749
Medicaid Recipients Under 18	27,570
Medicaid Recipients 65 and Older	16,653
Medicaid Recipients Who Are Female	49,927

HUD

Individuals Receiving HUD Rental Assistance	35,522
Households Receiving HUD Rental Assistance	19,226
HUD Households with Children	4,158
Household Heads Receiving HUD Rental Assistance Who Are Single Mothers	3,506
Number of Household Head or Spouse Receiving HUD Rental Assistance Who are Disabled and/or Elderly	12,428

EITC and Social Security

EITC Tax Filers in 2014	36,727
SSI Beneficiaries in 2016	14,192
SSDI Beneficiaries in 2016	8,746

State/Local Tax Returns

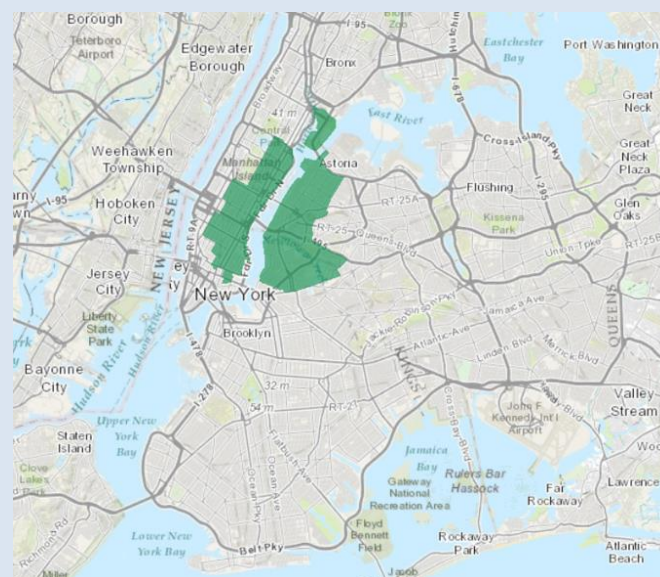
Total State Tax Returns	406,117
Number of SALT Returns	210,878
Amount Deducted from SALT Returns (\$1000s)	\$13,394,811
Income/Sales Deduction as Percent of Total SALT Deduction	89.6%

Source: Federal Funds Information for States (FFIS), U.S. Census American Community Survey (2017) and Institute on Taxation and Economic Policy (ITEP)



Poverty in District #12

All Families Living in Poverty	4.9%
Families with Single-Mom Householder	16.0%
All Individuals Living in Poverty	9.9%
Children Living in Poverty (Under 18 Years)	6.6%
Seniors Living in Poverty (65+ Years)	13.9%



District #13

Adriano Espaillat (D-Inwood)

Voted for the AHCA Bill?	No
Voted for the GOP Tax Bill?	No
Number of Uninsured By 2025 With Repeal of ACA Individual Mandate	21,400

Population and Household

Total Population in District	812,752
Foreign Born	311,780
Total Households	292,811
Households Making Less Than \$15,000 in Income	63,407
Households Making \$15,000 to \$34,999 in Income	69,620
Median Household Income (\$)	\$41,103

SNAP

SNAP Households	90,436
SNAP Households with Children	37,141
SNAP Households with Elderly	41,358
SNAP Retailers in District	1,006
SNAP Families Who Worked in 2015 (Households of 2 or More People)	80%

Medicaid

Medicaid Recipients	349,300
Medicaid Recipients Under 18	160,008
Medicaid Recipients 65 and Older	40,661
Medicaid Recipients Who Are Female	199,983

HUD

Individuals Receiving HUD Rental Assistance	139,398
Households Receiving HUD Rental Assistance	68,641
HUD Households with Children	20,155
Household Heads Receiving HUD Rental Assistance Who Are Single Mothers	17,526
Number of Household Head or Spouse Receiving HUD Rental Assistance Who are Disabled and/or Elderly	38,576

EITC and Social Security

EITC Tax Filers in 2014	110,922
SSI Beneficiaries in 2016	57,523
SSDI Beneficiaries in 2016	20,925

State/Local Tax Returns

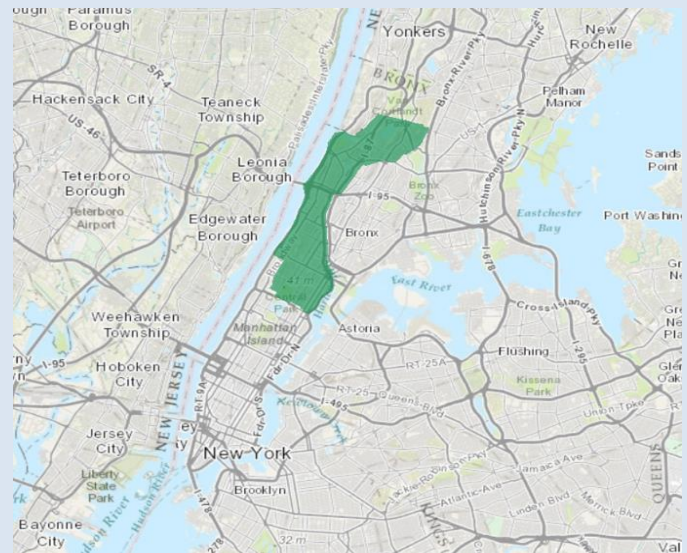
Total State Tax Returns	356,703
Number of SALT Returns	80,854
Amount Deducted from SALT Returns (\$1000s)	\$1,008,516
Income/Sales Deduction as Percent of Total SALT Deduction	88.2%

Source: Federal Funds Information for States (FFIS), U.S. Census American Community Survey (2017) and Institute on Taxation and Economic Policy (ITEP)



Poverty in District #13

All Families Living in Poverty	23.9%
Families with Single-Mom Householder	34.0%
All Individuals Living in Poverty	27.3%
Children Living in Poverty (Under 18 Years)	40.3%
Seniors Living in Poverty (65+ Years)	28.5%



District #14

Joseph Crowley (D-Throggs Neck)

Voted for the AHCA Bill?	No
Voted for the GOP Tax Bill?	No
Number of Uninsured By 2025 With Repeal of ACA Individual Mandate	36,000

Population and Household

Total Population in District	691,715
Foreign Born	316,941
Total Households	234,113
Households Making Less Than \$15,000 in Income	28,163
Households Making \$15,000 to \$34,999 in Income	48,421
Median Household Income (\$)	\$53,512

SNAP

SNAP Households	41,390
SNAP Households with Children	20,983
SNAP Households with Elderly	17,617
SNAP Retailers in District	796
SNAP Families Who Worked in 2015 (Households of 2 or More People)	83%

Medicaid

Medicaid Recipients	247,759
Medicaid Recipients Under 18	127,996
Medicaid Recipients 65 and Older	25,149
Medicaid Recipients Who Are Female	137,617

HUD

Individuals Receiving HUD Rental Assistance	26,085
Households Receiving HUD Rental Assistance	26,085
HUD Households with Children	3,773
Household Heads Receiving HUD Rental Assistance Who Are Single Mothers	3,435
Number of Household Head or Spouse Receiving HUD Rental Assistance Who are Disabled and/or Elderly	8,011

EITC and Social Security

EITC Tax Filers in 2014	85,772
SSI Beneficiaries in 2016	22,463
SSDI Beneficiaries in 2016	12,565

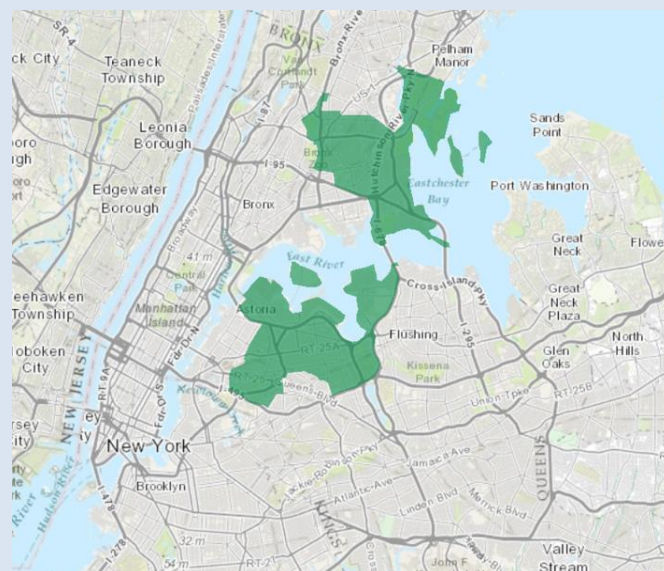
State/Local Tax Returns

Total State Tax Returns	350,853
Number of SALT Returns	88,939
Amount Deducted from SALT Returns (\$1000s)	\$847,608
Income/Sales Deduction as Percent of Total SALT Deduction	78.8%



Poverty in District #14

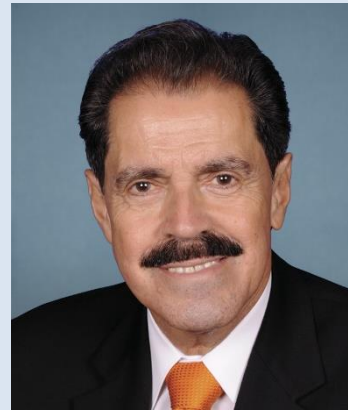
All Families Living in Poverty	12.1%
Families with Single-Mom Householder	19.4%
All Individuals Living in Poverty	15.2%
Children Living in Poverty (Under 18 Years)	20.2%
Seniors Living in Poverty (65+ Years)	16.0%



Source: Federal Funds Information for States (FFIS), U.S. Census American Community Survey (2017) and Institute on Taxation and Economic Policy (ITEP)

District #15

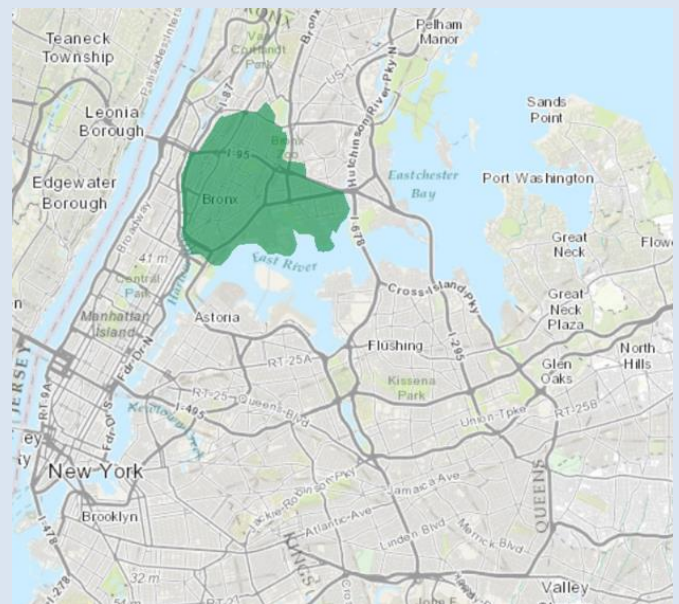
José Serrano (D-Concourse)



Voted for the AHCA Bill?	No
Voted for the GOP Tax Bill?	No
Number of Uninsured By 2025 With Repeal of ACA Individual Mandate	18,100
Population and Household	
Total Population in District	768,801
Foreign Born	293,736
Total Households	253,527
Households Making Less Than \$15,000 in Income	76,862
Households Making \$15,000 to \$34,999 in Income	65,783
Median Household Income (\$)	\$29,234
SNAP	
SNAP Households	118,105
SNAP Households with Children	58,847
SNAP Households with Elderly	40,978
SNAP Retailers in District	1,300
SNAP Families Who Worked in 2015 (Households of 2 or More People)	69%
Medicaid	
Medicaid Recipients	446,935
Medicaid Recipients Under 18	226,888
Medicaid Recipients 65 and Older	42,253
Medicaid Recipients Who Are Female	252,389
HUD	
Individuals Receiving HUD Rental Assistance	182,204
Households Receiving HUD Rental Assistance	81,068
HUD Households with Children	29,849
Household Heads Receiving HUD Rental Assistance Who Are Single Mothers	26,229
Number of Household Head or Spouse Receiving HUD Rental Assistance Who are Disabled and/or Elderly	41,583
EITC and Social Security	
EITC Tax Filers in 2014	145,276
SSI Beneficiaries in 2016	71,889
SSDI Beneficiaries in 2016	22,025
State/Local Tax Returns	
Total State Tax Returns	331,497
Number of SALT Returns	50,800
Amount Deducted from SALT Returns (\$1000s)	\$292,755
Income/Sales Deduction as Percent of Total SALT Deduction	86%

Poverty in District #15

All Families Living in Poverty	32.5%
Families with Single-Mom Householder	44.1%
All Individuals Living in Poverty	36.0%
Children Living in Poverty (Under 18 Years)	47.2%
Seniors Living in Poverty (65+ Years)	32.4%



Source: Federal Funds Information for States (FFIS), U.S. Census American Community Survey (2017) and Institute on Taxation and Economic Policy (ITEP)

District #16

Eliot Engel (D-Riverdale)

Voted for the AHCA Bill?	No
Voted for the GOP Tax Bill?	No
Number of Uninsured By 2025 With Repeal of ACA Individual Mandate	18,800

Population and Household

Total Population in District	736,806
Foreign Born	222,837
Total Households	265,359
Households Making Less Than \$15,000 in Income	31,271
Households Making \$15,000 to \$34,999 in Income	43,154
Median Household Income (\$)	\$69,086

SNAP

SNAP Households	38,089
SNAP Households with Children	18,450
SNAP Households with Elderly	15,389
SNAP Retailers in District	612
SNAP Families Who Worked in 2015 (Households of 2 or More People)	79%

Medicaid

Medicaid Recipients	182,129
Medicaid Recipients Under 18	90,044
Medicaid Recipients 65 and Older	20,657
Medicaid Recipients Who Are Female	99,742

HUD

Individuals Receiving HUD Rental Assistance	51,935
Households Receiving HUD Rental Assistance	24,301
HUD Households with Children	8,701
Household Heads Receiving HUD Rental Assistance Who Are Single Mothers	7,731
Number of Household Head or Spouse Receiving HUD Rental Assistance Who are Disabled and/or Elderly	13,191

EITC and Social Security

EITC Tax Filers in 2014	64,085
SSI Beneficiaries in 2016	22,225
SSDI Beneficiaries in 2016	14,998

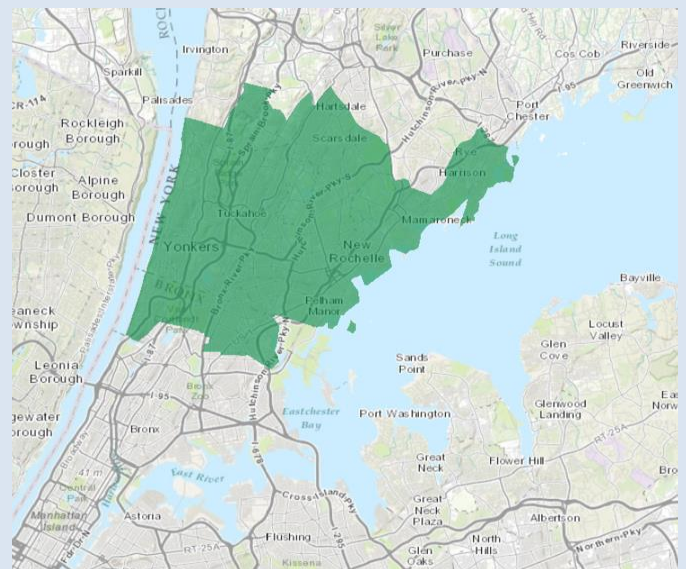
State/Local Tax Returns

Total State Tax Returns	357,009
Number of SALT Returns	143,754
Amount Deducted from SALT Returns (\$1000s)	\$4,126,824
Income/Sales Deduction as Percent of Total SALT Deduction	68.2%



Poverty in District #16

All Families Living in Poverty	9.7%
Families with Single-Mom Householder	20.9%
All Individuals Living in Poverty	13.2%
Children Living in Poverty (Under 18 Years)	17.3%
Seniors Living in Poverty (65+ Years)	10.4%



Source: Federal Funds Information for States (FFIS), U.S. Census American Community Survey (2017) and Institute on Taxation and Economic Policy (ITEP)

District #17

Nita Lowey (D-Harrison)

Voted for the AHCA Bill?	No
Voted for the GOP Tax Bill?	No
Number of Uninsured By 2025 With Repeal of ACA Individual Mandate	34,600

Population and Household

Total Population in District	744,406
Foreign Born	179,167
Total Households	242,934
Households Making Less Than \$15,000 in Income	16,242
Households Making \$15,000 to \$34,999 in Income	31,188
Median Household Income (\$)	\$94,451

SNAP

SNAP Households	21,819
SNAP Households with Children	11,840
SNAP Households with Elderly	7,887
SNAP Retailers in District	367
SNAP Families Who Worked in 2015 (Households of 2 or More People)	86%

Medicaid

Medicaid Recipients	153,965
Medicaid Recipients Under 18	94,113
Medicaid Recipients 65 and Older	15,359
Medicaid Recipients Who Are Female	84,078

HUD

Individuals Receiving HUD Rental Assistance	32,824
Households Receiving HUD Rental Assistance	11,891
HUD Households with Children	4,272
Household Heads Receiving HUD Rental Assistance Who Are Single Mothers	2,017
Number of Household Head or Spouse Receiving HUD Rental Assistance Who are Disabled and/or Elderly	6,772

EITC and Social Security

EITC Tax Filers in 2014	38,210
SSI Beneficiaries in 2016	10,227
SSDI Beneficiaries in 2016	12,075

State/Local Tax Returns

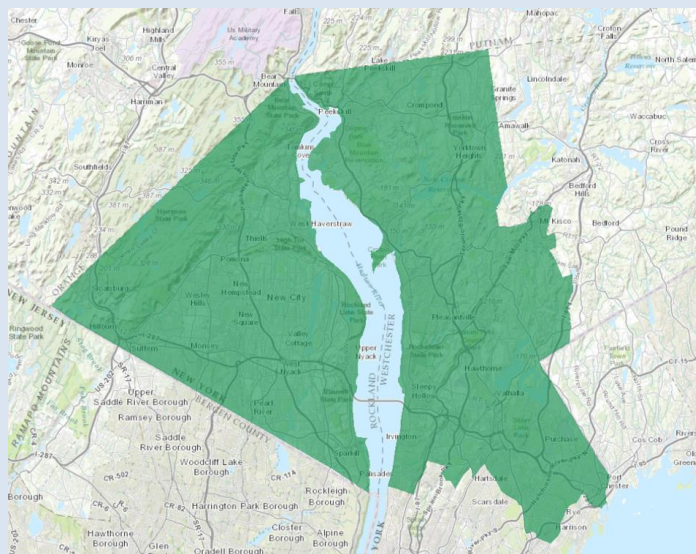
Total State Tax Returns	352,432
Number of SALT Returns	168,766
Amount Deducted from SALT Returns (\$1000s)	\$4,550,002
Income/Sales Deduction as Percent of Total SALT Deduction	57.9%

Source: Federal Funds Information for States (FFIS), U.S. Census American Community Survey (2017) and Institute on Taxation and Economic Policy (ITEP)



Poverty in District #17

All Families Living in Poverty	7.7%
Families with Single-Mom Householder	16.9%
All Individuals Living in Poverty	25.4%
Children Living in Poverty (Under 18 Years)	11.1%
Seniors Living in Poverty (65+ Years)	7.2%



District #18

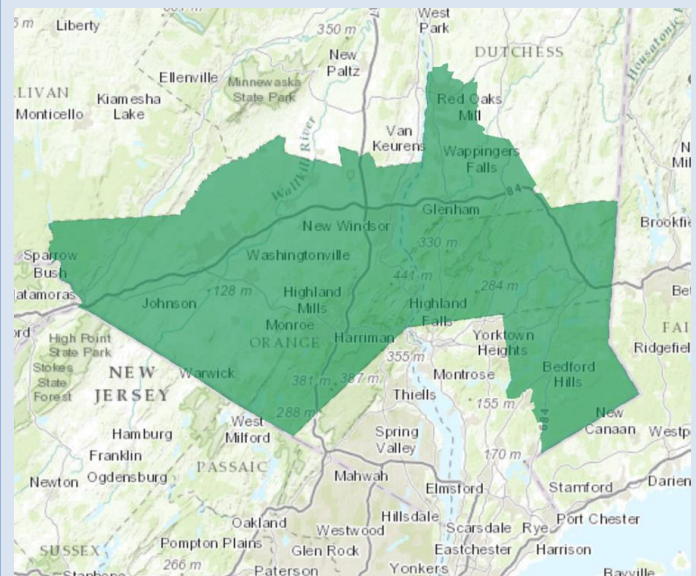
Sean Patrick Maloney (D-Carmel)



Voted for the AHCA Bill?	No
Voted for the GOP Tax Bill?	No
Number of Uninsured By 2025 With Repeal of ACA Individual Mandate	19,200
Population and Household	
Total Population in District	722,617
Foreign Born	88,416
Total Households	247,953
Households Making Less Than \$15,000 in Income	19,072
Households Making \$15,000 to \$34,999 in Income	35,944
Median Household Income (\$)	\$80,493
SNAP	
SNAP Households	23,373
SNAP Households with Children	10,802
SNAP Households with Elderly	7,870
SNAP Retailers in District	448
SNAP Families Who Worked in 2015 (Households of 2 or More People)	69%
Medicaid	
Medicaid Recipients	129,726
Medicaid Recipients Under 18	68,382
Medicaid Recipients 65 and Older	10,720
Medicaid Recipients Who Are Female	68,924
HUD	
Individuals Receiving HUD Rental Assistance	24,405
Households Receiving HUD Rental Assistance	8,754
HUD Households with Children	3,779
Household Heads Receiving HUD Rental Assistance Who Are Single Mothers	2,179
Number of Household Head or Spouse Receiving HUD Rental Assistance Who are Disabled and/or Elderly	4,870
EITC and Social Security	
EITC Tax Filers in 2014	40,855
SSI Beneficiaries in 2016	11,744
SSDI Beneficiaries in 2016	18,852
State/Local Tax Returns	
Total State Tax Returns	338,267
Number of SALT Returns	148,556
Amount Deducted from SALT Returns (\$1000s)	\$2,833,681
Income/Sales Deduction as Percent of Total SALT Deduction	53.4%

Poverty in District #18

All Families Living in Poverty	6.6%
Families with Single-Mom Householder	18.3%
All Individuals Living in Poverty	10.1%
Children Living in Poverty (Under 18 Years)	14.2%
Seniors Living in Poverty (65+ Years)	7.1%



Source: Federal Funds Information for States (FFIS), U.S. Census American Community Survey (2017) and Institute on Taxation and Economic Policy (ITEP)

District #19**John Faso (R-Kinderhook)**

Voted for the AHCA Bill?	Yes
Voted for the GOP Tax Bill?	No
Number of Uninsured By 2025 With Repeal of ACA Individual Mandate	17,300

Population and Household

Total Population in District	698,185
Foreign Born	47,019
Total Households	262,401
Households Making Less Than \$15,000 in Income	27,654
Households Making \$15,000 to \$34,999 in Income	52,198
Median Household Income (\$)	\$59,619

SNAP

SNAP Households	29,452
SNAP Households with Children	12,705
SNAP Households with Elderly	10,019
SNAP Retailers in District	690
SNAP Families Who Worked in 2015 (Households of 2 or More People)	72%

Medicaid

Medicaid Recipients	143,279
Medicaid Recipients Under 18	68,298
Medicaid Recipients 65 and Older	13,531
Medicaid Recipients Who Are Female	76,562

HUD

Individuals Receiving HUD Rental Assistance	17,562
Households Receiving HUD Rental Assistance	8,525
HUD Households with Children	2,942
Household Heads Receiving HUD Rental Assistance Who Are Single Mothers	2,208
Number of Household Head or Spouse Receiving HUD Rental Assistance Who are Disabled and/or Elderly	5,554

EITC and Social Security

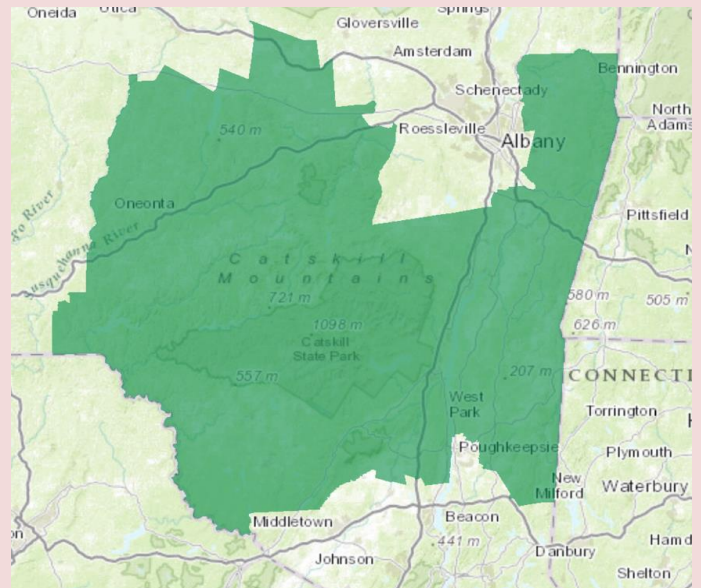
EITC Tax Filers in 2014	46,703
SSI Beneficiaries in 2016	14,823
SSDI Beneficiaries in 2016	23,486

State/Local Tax Returns

Total State Tax Returns	314,540
Number of SALT Returns	102,819
Amount Deducted from SALT Returns (\$1000s)	\$1,368,035
Income/Sales Deduction as Percent of Total SALT Deduction	49.9%

**Poverty in District #19**

All Families Living in Poverty	9.0%
Families with Single-Mom Householder	25.4%
All Individuals Living in Poverty	13.5%
Children Living in Poverty (Under 18 Years)	18.1%
Seniors Living in Poverty (65+ Years)	9.4%



Source: Federal Funds Information for States (FFIS), U.S. Census American Community Survey (2017) and Institute on Taxation and Economic Policy (ITEP)

District #20

Paul Tonko (D-Amsterdam)

Voted for the AHCA Bill?	No
Voted for the GOP Tax Bill?	No
Number of Uninsured By 2025 With Repeal of ACA Individual Mandate	40,700

Population and Household

Total Population in District	723,416
Foreign Born	64,710
Total Households	279,485
Households Making Less Than \$15,000 in Income	27,333
Households Making \$15,000 to \$34,999 in Income	50,917
Median Household Income (\$)	\$64,226

SNAP

SNAP Households	32,510
SNAP Households with Children	11,647
SNAP Households with Elderly	9,903
SNAP Retailers in District	696
SNAP Families Who Worked in 2015 (Households of 2 or More People)	75%

Medicaid

Medicaid Recipients	133,969
Medicaid Recipients Under 18	65,648
Medicaid Recipients 65 and Older	12,906
Medicaid Recipients Who Are Female	71,007

HUD

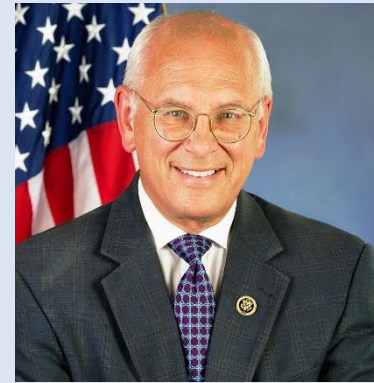
Individuals Receiving HUD Rental Assistance	31,239
Households Receiving HUD Rental Assistance	16,724
HUD Households with Children	5,657
Household Heads Receiving HUD Rental Assistance Who Are Single Mothers	4,911
Number of Household Head or Spouse Receiving HUD Rental Assistance Who are Disabled and/or Elderly	10,423

EITC and Social Security

EITC Tax Filers in 2014	49,438
SSI Beneficiaries in 2016	18,799
SSDI Beneficiaries in 2016	21,831

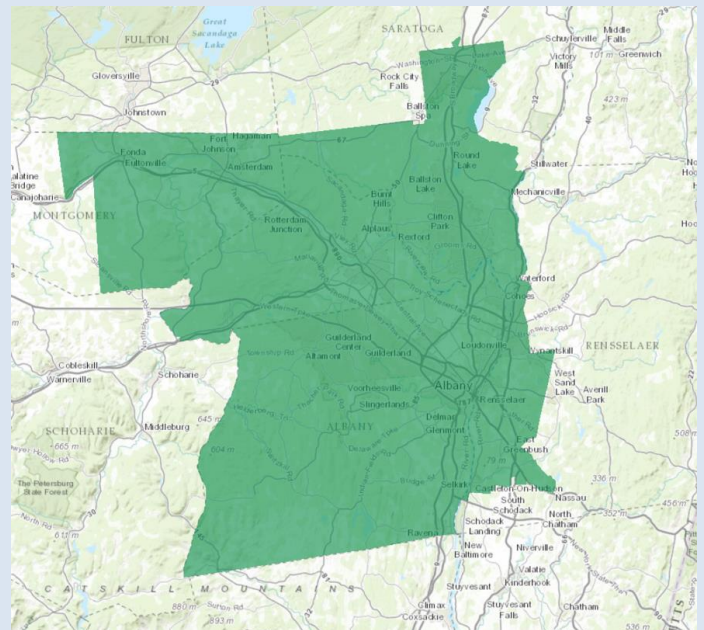
State/Local Tax Returns

Total State Tax Returns	356,738
Number of SALT Returns	122,114
Amount Deducted from SALT Returns (\$1000s)	\$1,800,020
Income/Sales Deduction as Percent of Total SALT Deduction	57.8%



Poverty in District #20

All Families Living in Poverty	7.1%
Families with Single-Mom Householder	22.1%
All Individuals Living in Poverty	11.0%
Children Living in Poverty (Under 18 Years)	15.7%
Seniors Living in Poverty (65+ Years)	5.0%



Source: Federal Funds Information for States (FFIS), U.S. Census American Community Survey (2017) and Institute on Taxation and Economic Policy (ITEP)

District #21

Elise M. Stefanik (R-Willsboro)



Population and Household

Voted for the AHCA Bill?	Yes
Voted for the GOP Tax Bill?	No
Number of Uninsured By 2025 With Repeal of ACA Individual Mandate	17,500
Population and Household	
Total Population in District	711,798
Foreign Born	24,075
Total Households	277,069
Households Making Less Than \$15,000 in Income	31,759
Households Making \$15,000 to \$34,999 in Income	58,674
Median Household Income (\$)	\$52,350

SNAP

SNAP Households	39,884
SNAP Households with Children	16,822
SNAP Households with Elderly	11,615
SNAP Retailers in District	743
SNAP Families Who Worked in 2015 (Households of 2 or More People)	74%

Medicaid

Medicaid Recipients	164,136
Medicaid Recipients Under 18	81,942
Medicaid Recipients 65 and Older	15,070
Medicaid Recipients Who Are Female	86,869

HUD

Individuals Receiving HUD Rental Assistance	20,304
Households Receiving HUD Rental Assistance	11,438
HUD Households with Children	3,180
Household Heads Receiving HUD Rental Assistance Who Are Single Mothers	2,427
Number of Household Head or Spouse Receiving HUD Rental Assistance Who are Disabled and/or Elderly	8,328

EITC and Social Security

EITC Tax Filers in 2014	56,790
SSI Beneficiaries in 2016	19,122
SSDI Beneficiaries in 2016	28,437

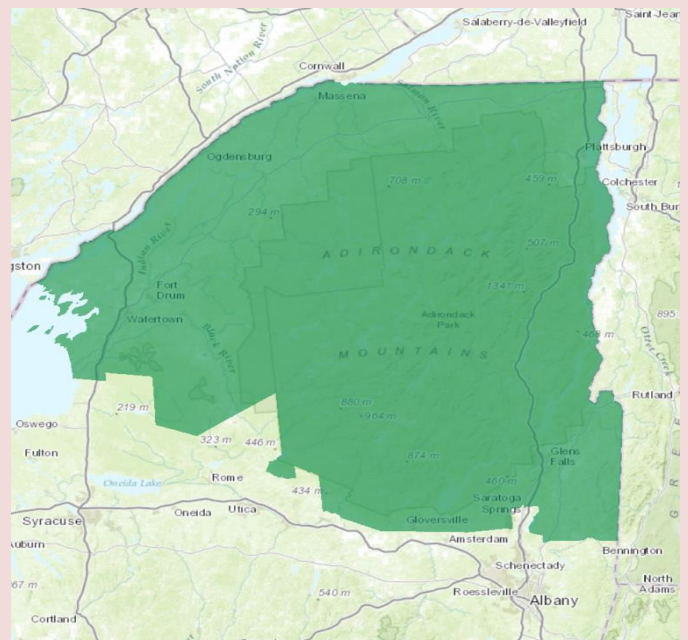
State/Local Tax Returns

Total State Tax Returns	310,498
Number of SALT Returns	70,671
Amount Deducted from SALT Returns (\$1000s)	\$805,662
Income/Sales Deduction as Percent of Total SALT Deduction	57.1%

Source: Federal Funds Information for States (FFIS), U.S. Census American Community Survey (2017) and Institute on Taxation and Economic Policy (ITEP)

Poverty in District #21

All Families Living in Poverty	8.9%
Families with Single-Mom Householder	26.7%
All Individuals Living in Poverty	13.7%
Children Living in Poverty (Under 18 Years)	18.9%
Seniors Living in Poverty (65+ Years)	7.5%



District #22

Claudia Tenney (R-New Hartford)



Population and Household

Voted for the AHCA Bill?	Yes
Voted for the GOP Tax Bill?	Yes
Number of Uninsured By 2025 With Repeal of ACA Individual Mandate	17,700
Population and Household	
Total Population in District	703,464
Foreign Born	36,294
Total Households	270,214
Households Making Less Than \$15,000 in Income	33,848
Households Making \$15,000 to \$34,999 in Income	56,823
Median Household Income (\$)	\$52,967

SNAP

SNAP Households	45,584
SNAP Households with Children	18,855
SNAP Households with Elderly	14,677
SNAP Retailers in District	733
SNAP Families Who Worked in 2015 (Households of 2 or More People)	69%

Medicaid

Medicaid Recipients	176,387
Medicaid Recipients Under 18	86,982
Medicaid Recipients 65 and Older	14,150
Medicaid Recipients Who Are Female	91,953

HUD

Individuals Receiving HUD Rental Assistance	19,606
Households Receiving HUD Rental Assistance	10,860
HUD Households with Children	3,100
Household Heads Receiving HUD Rental Assistance Who Are Single Mothers	2,504
Number of Household Head or Spouse Receiving HUD Rental Assistance Who are Disabled and/or Elderly	7,751

EITC and Social Security

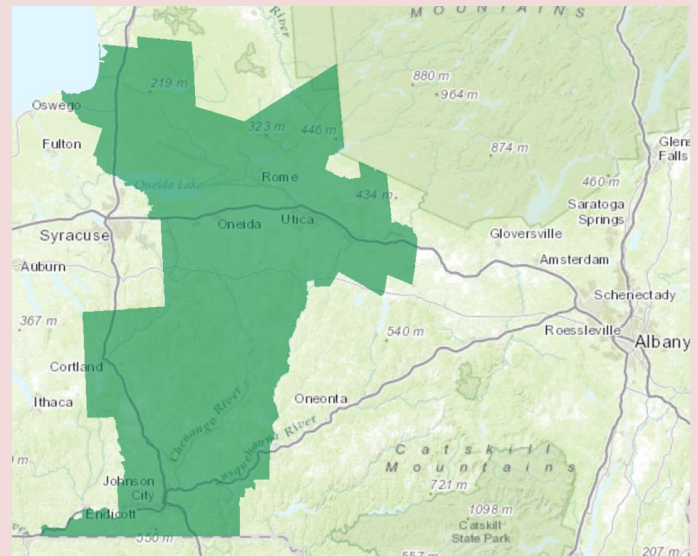
EITC Tax Filers in 2014	57,316
SSI Beneficiaries in 2016	22,095
SSDI Beneficiaries in 2016	27,515

State/Local Tax Returns

Total State Tax Returns	308,959
Number of SALT Returns	70,870
Amount Deducted from SALT Returns (\$1000s)	\$803,802
Income/Sales Deduction as Percent of Total SALT Deduction	53.5%

Poverty in District #22

All Families Living in Poverty	10.1%
Families with Single-Mom Householder	30.3%
All Individuals Living in Poverty	15.2%
Children Living in Poverty (Under 18 Years)	24.0%
Seniors Living in Poverty (65+ Years)	7.7%



Source: Federal Funds Information for States (FFIS), U.S. Census American Community Survey (2017) and Institute on Taxation and Economic Policy (ITEP)

District #23

Tom Reed (R-Corning)

Voted for the AHCA Bill?	Yes
Voted for the GOP Tax Bill?	Yes
Number of Uninsured By 2025 With Repeal of ACA Individual Mandate	18,700

Population and Household

Total Population in District	703,717
Foreign Born	31,929
Total Households	272,324
Households Making Less Than \$15,000 in Income	36,473
Households Making \$15,000 to \$34,999 in Income	62,898
Median Household Income (\$)	\$48,730

SNAP

SNAP Households	39,874
SNAP Households with Children	16,063
SNAP Households with Elderly	12,605
SNAP Retailers in District	627
SNAP Families Who Worked in 2015 (Households of 2 or More People)	70%

Medicaid

Medicaid Recipients	158,519
Medicaid Recipients Under 18	77,253
Medicaid Recipients 65 and Older	12,933
Medicaid Recipients Who Are Female	84,070

HUD

Individuals Receiving HUD Rental Assistance	22,465
Households Receiving HUD Rental Assistance	11,959
HUD Households with Children	3,820
Household Heads Receiving HUD Rental Assistance Who Are Single Mothers	3,093
Number of Household Head or Spouse Receiving HUD Rental Assistance Who are Disabled and/or Elderly	7,933

EITC and Social Security

EITC Tax Filers in 2014	55,582
SSI Beneficiaries in 2016	19,304
SSDI Beneficiaries in 2016	26,761

State/Local Tax Returns

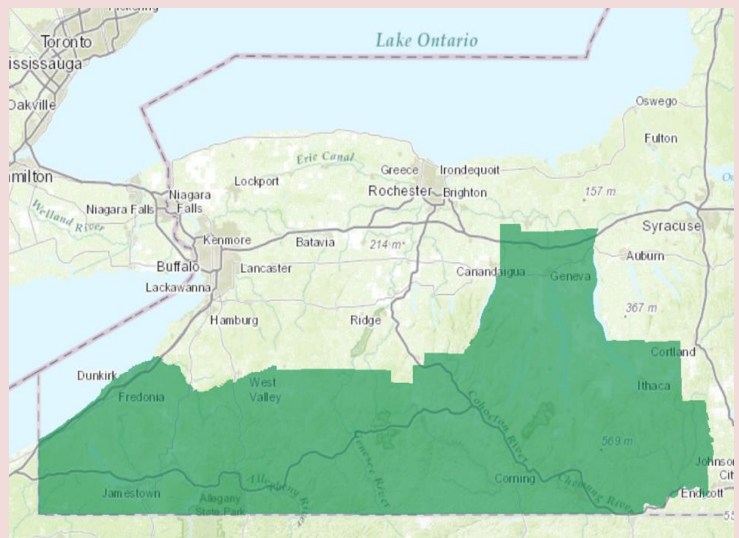
Total State Tax Returns	301,876
Number of SALT Returns	64,926
Amount Deducted from SALT Returns (\$1000s)	\$758,826
Income/Sales Deduction as Percent of Total SALT Deduction	53.4%

Source: Federal Funds Information for States (FFIS), U.S. Census American Community Survey (2017) and Institute on Taxation and Economic Policy (ITEP)



Poverty in District #23

All Families Living in Poverty	10.0%
Families with Single-Mom Householder	30.3%
All Individuals Living in Poverty	16.2%
Children Living in Poverty (Under 18 Years)	22.3%
Seniors Living in Poverty (65+ Years)	6.9%



District #24

John Katko (R-Camillus)

Voted for the AHCA Bill?	No
Voted for the GOP Tax Bill?	Yes
Number of Uninsured By 2025 With Repeal of ACA Individual Mandate	18,300

Population and Household

Total Population in District	707,479
Foreign Born	42,680
Total Households	278,410
Households Making Less Than \$15,000 in Income	34,142
Households Making \$15,000 to \$34,999 in Income	51,179
Median Household Income (\$)	\$56,388

SNAP

SNAP Households	39,431
SNAP Households with Children	16,379
SNAP Households with Elderly	13,106
SNAP Retailers in District	649
SNAP Families Who Worked in 2015 (Households of 2 or More People)	72%

Medicaid

Medicaid Recipients	152,994
Medicaid Recipients Under 18	77,820
Medicaid Recipients 65 and Older	13,906
Medicaid Recipients Who Are Female	80,778

HUD

Individuals Receiving HUD Rental Assistance	26,799
Households Receiving HUD Rental Assistance	14,191
HUD Households with Children	4,526
Household Heads Receiving HUD Rental Assistance Who Are Single Mothers	3,925
Number of Household Head or Spouse Receiving HUD Rental Assistance Who are Disabled and/or Elderly	8,956

EITC and Social Security

EITC Tax Filers in 2014	56,439
SSI Beneficiaries in 2016	20,431
SSDI Beneficiaries in 2016	24,153

State/Local Tax Returns

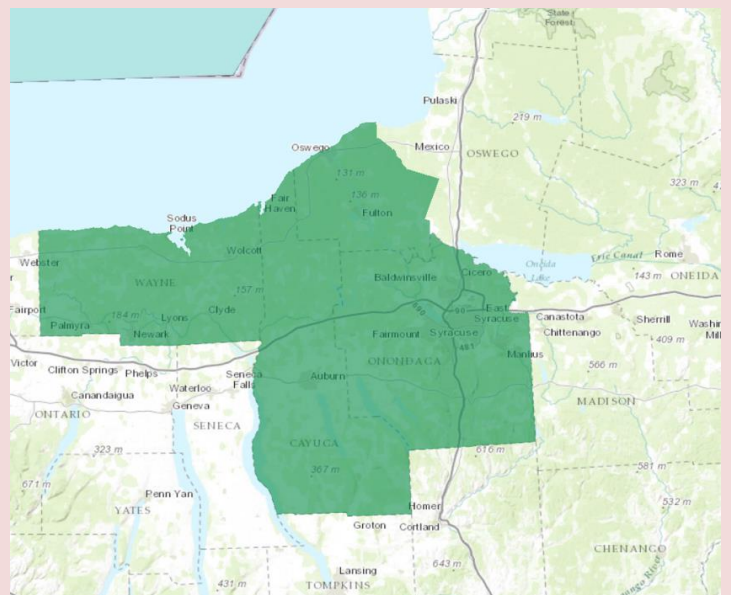
Total State Tax Returns	330,286
Number of SALT Returns	97,898
Amount Deducted from SALT Returns (\$1000s)	\$1,239,951
Income/Sales Deduction as Percent of Total SALT Deduction	52.6%

Source: Federal Funds Information for States (FFIS), U.S. Census American Community Survey (2017) and Institute on Taxation and Economic Policy (ITEP)



Poverty in District #24

All Families Living in Poverty	9.6%
Families with Single-Mom Householder	29.6%
All Individuals Living in Poverty	14.3%
Children Living in Poverty (Under 18 Years)	20.0%
Seniors Living in Poverty (65+ Years)	7.8%



Voted for the AHCA Bill?	No
Voted for the GOP Tax Bill?	No
Number of Uninsured By 2025 With Repeal of ACA Individual Mandate	42,100

Population and Household

Total Population in District	720,963
Foreign Born	65,021
Total Households	288,805
Households Making Less Than \$15,000 in Income	39,337
Households Making \$15,000 to \$34,999 in Income	56,075
Median Household Income (\$)	\$53,723

SNAP

SNAP Households	46,120
SNAP Households with Children	21,258
SNAP Households with Elderly	12,108
SNAP Retailers in District	599
SNAP Families Who Worked in 2015 (Households of 2 or More People)	71%

Medicaid

Medicaid Recipients	166,587
Medicaid Recipients Under 18	82,199
Medicaid Recipients 65 and Older	12,339
Medicaid Recipients Who Are Female	92,618

HUD

Individuals Receiving HUD Rental Assistance	31,212
Households Receiving HUD Rental Assistance	15,559
HUD Households with Children	5,869
Household Heads Receiving HUD Rental Assistance Who Are Single Mothers	5,248
Number of Household Head or Spouse Receiving HUD Rental Assistance Who are Disabled and/or Elderly	9,553

EITC and Social Security

EITC Tax Filers in 2014	57,805
SSI Beneficiaries in 2016	25,509
SSDI Beneficiaries in 2016	24,346

State/Local Tax Returns

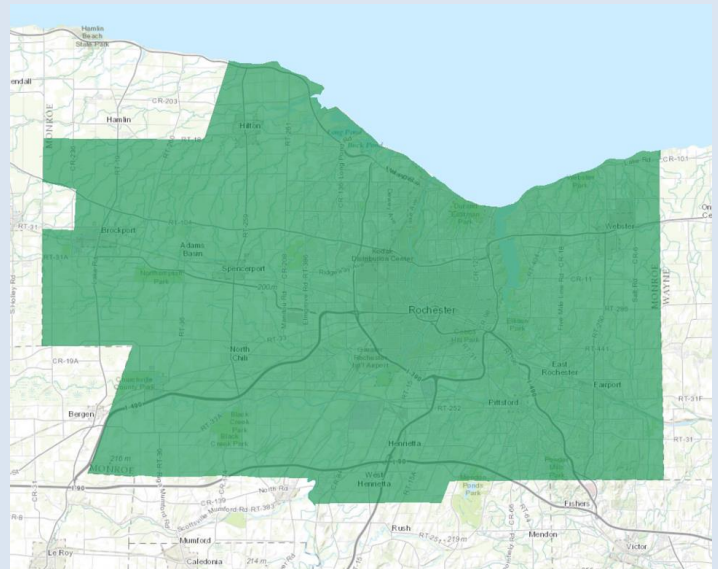
Total State Tax Returns	345,864
Number of SALT Returns	115,047
Amount Deducted from SALT Returns (\$1000s)	\$1,563,384
Income/Sales Deduction as Percent of Total SALT Deduction	52.7%

Source: Federal Funds Information for States (FFIS), U.S. Census American Community Survey (2017) and Institute on Taxation and Economic Policy (ITEP)



Poverty in District #25

All Families Living in Poverty	11.2%
Families with Single-Mom Householder	30.0%
All Individuals Living in Poverty	15.4%
Children Living in Poverty (Under 18 Years)	22.4%
Seniors Living in Poverty (65+ Years)	7.7%



Voted for the AHCA Bill?	No
Voted for the GOP Tax Bill?	No
Number of Uninsured By 2025 With Repeal of ACA Individual Mandate	17,900

Population and Household

Total Population in District	709,220
Foreign Born	55,003
Total Households	298,589
Households Making Less Than \$15,000 in Income	51,210
Households Making \$15,000 to \$34,999 in Income	65,021
Median Household Income (\$)	\$47,358

SNAP

SNAP Households	64,790
SNAP Households with Children	27,284
SNAP Households with Elderly	18,302
SNAP Retailers in District	795
SNAP Families Who Worked in 2015 (Households of 2 or More People)	71%

Medicaid

Medicaid Recipients	212,405
Medicaid Recipients Under 18	107,845
Medicaid Recipients 65 and Older	17,044
Medicaid Recipients Who Are Female	117,611

HUD

Individuals Receiving HUD Rental Assistance	45,235
Households Receiving HUD Rental Assistance	23,557
HUD Households with Children	8,229
Household Heads Receiving HUD Rental Assistance Who Are Single Mothers	7,291
Number of Household Head or Spouse Receiving HUD Rental Assistance Who are Disabled and/or Elderly	13,853

EITC and Social Security

EITC Tax Filers in 2014	64,664
SSI Beneficiaries in 2016	28,467
SSDI Beneficiaries in 2016	28,172

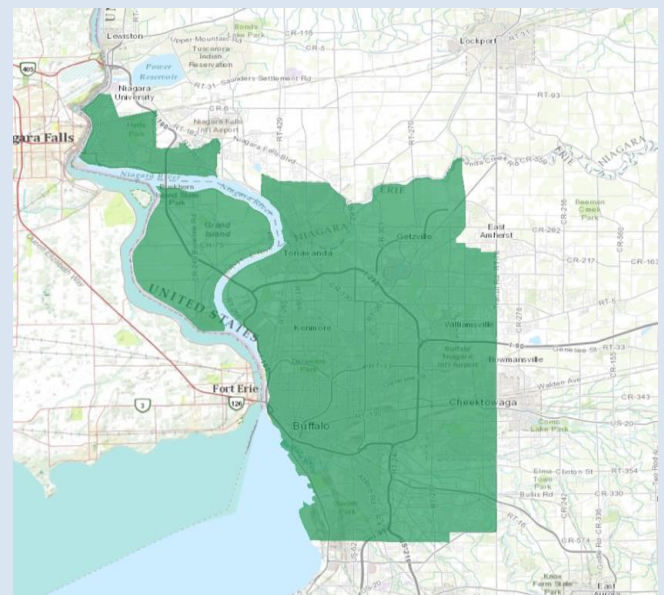
State/Local Tax Returns

Total State Tax Returns	337,775
Number of SALT Returns	79,400
Amount Deducted from SALT Returns (\$1000s)	\$911,206
Income/Sales Deduction as Percent of Total SALT Deduction	57.8%



Poverty in District #26

All Families Living in Poverty	12.7%
Families with Single-Mom Householder	26.8%
All Individuals Living in Poverty	17.8%
Children Living in Poverty (Under 18 Years)	25.7%
Seniors Living in Poverty (65+ Years)	9.5%



Source: Federal Funds Information for States (FFIS), U.S. Census American Community Survey (2017) and Institute on Taxation and Economic Policy (ITEP)

District #27

Chris Collins (R-Clarence)

Voted for the AHCA Bill?	Yes
Voted for the GOP Tax Bill?	Yes
Number of Uninsured By 2025 With Repeal of ACA Individual Mandate	18,100

Population and Household

Total Population in District	720,133
Foreign Born	23,497
Total Households	285,986
Households Making Less Than \$15,000 in Income	22,060
Households Making \$15,000 to \$34,999 in Income	50,284
Median Household Income (\$)	\$62,698

SNAP

SNAP Households	25,577
SNAP Households with Children	10,998
SNAP Households with Elderly	9,051
SNAP Retailers in District	483
SNAP Families Who Worked in 2015 (Households of 2 or More People)	69%

Medicaid

Medicaid Recipients	118,379
Medicaid Recipients Under 18	56,340
Medicaid Recipients 65 and Older	14,610
Medicaid Recipients Who Are Female	66,587

HUD

Individuals Receiving HUD Rental Assistance	11,488
Households Receiving HUD Rental Assistance	7,021
HUD Households with Children	1,734
Household Heads Receiving HUD Rental Assistance Who Are Single Mothers	1,451
Number of Household Head or Spouse Receiving HUD Rental Assistance Who are Disabled and/or Elderly	5,260

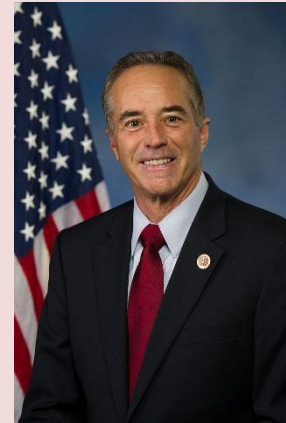
EITC and Social Security

EITC Tax Filers in 2014	40,514
SSI Beneficiaries in 2016	9,905
SSDI Beneficiaries in 2016	22,604

State/Local Tax Returns

Total State Tax Returns	347,618
Number of SALT Returns	111,175
Amount Deducted from SALT Returns (\$1000s)	\$1,442,105
Income/Sales Deduction as Percent of Total SALT Deduction	54.9%

Source: Federal Funds Information for States (FFIS), U.S. Census American Community Survey (2017) and Institute on Taxation and Economic Policy (ITEP)



Poverty in District #27

All Families Living in Poverty	5.6%
Families with Single-Mom Householder	20.5%
All Individuals Living in Poverty	8.5%
Children Living in Poverty (Under 18 Years)	11.8%
Seniors Living in Poverty (65+ Years)	5.8%

